



Your #1 Source for fire-resistant, structural building panels!

**ARMOROC ASTM E119 TEST SUMMARY SHEET**

**TWO HOUR FIRE-RATED FLOOR ASSEMBLY WITH MARINO\WARE JOISTRITE**

June, 30, 2007

**Test Performed:** ASTM E119 / UL 263

**MEA #:** 206-08-M

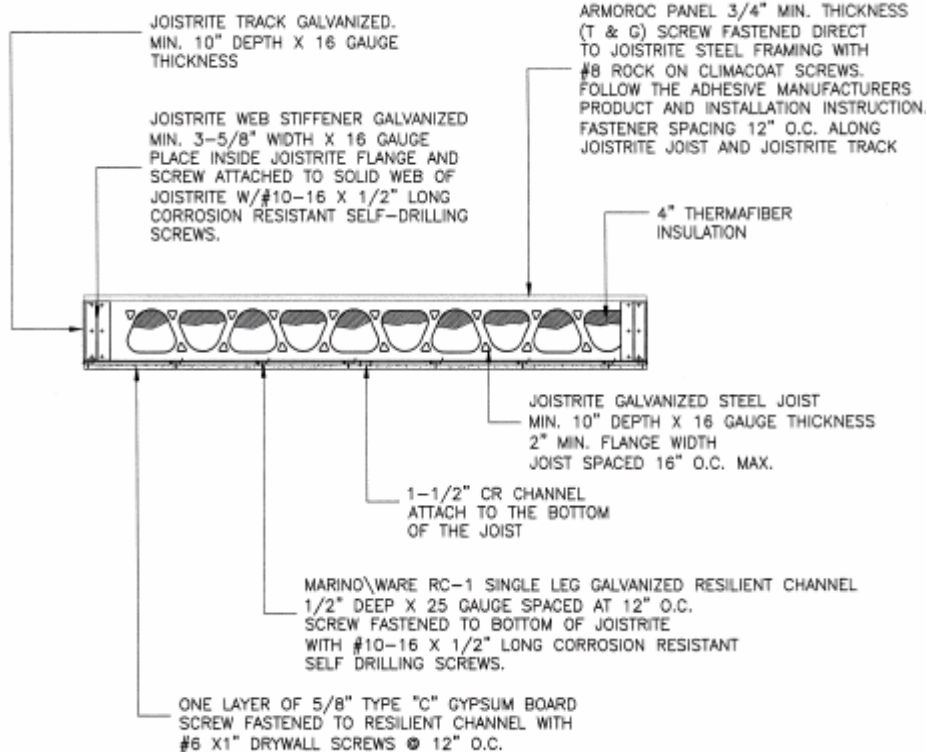
**Test Date:** May 23, 2008

**Testing Lab:** VTEC Laboratories Inc.  
212 Manida Street  
Bronx, NY 10474

**Referenced Report #:** VTEC #100-2949-1

**Subject:** Small Scale Two Hour ASTM E119 / UL263 Fire Endurance Screening Testing on Marino\WARE JoistRite with ARMOROC Panel.

**Test Method:** This test was conducted in accordance with ASTM E119 / UL 263



**Sample Description:**

1. ARMOROC Board by Ameriform, 3/4" minimum thickness, Pemco P5100 adhesive applied to Armoroc board joints only, screw fastened direct to JoistRite Steel framing by Marino\WARE with #8 Rock-On Climacoat screws. Fastener spacing 12" O.C.
2. 1000JR200-54 JoistRite galvanized steel joists, 10" depth x 16 ga thickness x 2" flange width. Joists spaced at 16" O.C. maximum.

**(CONTINUED)**



*Your #1 Source for fire-resistant, structural building panels!*

3. 1000JR250-54 galvanized steel JoistRite Track receiving ends of JoistRite Joists, 10" depth x 16 ga minimum. Screw fastened to top & bottom flange of JoistRite Joist with #10-16 x 3/4" corrosion resistant self-drilling screws.
4. Galvanized steel JoistRite Web Stiffener, 3-5/8" x 16ga, placed inside of perimeter JoistRite flange and placed outside of other JoistRite Joists. JoistRite Web Stiffener attached to web of JoistRite with four #10-16 x 3/4" corrosion resistant self-drilling screws.
5. 1000JB16 JoistRite Solid Blocking was placed between the second and third JoistRite joists, between the third and fourth JoistRite joists, between the fourth and fifth JoistRite joists, and between the fifth and sixth JoistRite Joists. Screw fastened to top & bottom flange of JoistRite joist with #10-16 x 3/4" corrosion resistant self-drilling screws through predrilled holes.
6. 1-1/2" CR Channel along the bridging line.
7. Marino\WARE RC-1 single leg galvanized resilient channel. 1/2" deep x 25 ga minimum at 12" O.C. screw fastened to bottom flange of JoistRite steel joist with #10-16 x 1/2" corrosion resistant self-drilling screws.
8. Thermafiber insulation 4" thick in joist cavity against ARMOROC Panel.
9. One layer of 5/8" Type C gypsum board, screw fastened to resilient furring channels with #6 x 1" drywall screws at 12" O.C.

**Results:**

1. At 20 minutes, smoke began emitting from the sample.
2. At 129 minutes, the furnace was voluntarily shut-off without reaching any of the end points.

The material provided met all the passing criteria as specified by ASTM E119 / UL 263.

**Testing Lab Signatures:** Original test report "VTEC #100-2949-1" signed by Neil Shultz, Executive Director and Amirudin Rahim, Technical Director.

**Disclaimer:** This summary report is based on a factual report of the results obtained from the laboratory test of sample products. This summary report should be used to measure and describe the properties of materials, products or assemblies in response to heat and flame under controlled laboratory conditions. It should not be used to describe or appraise the fire hazards or fire risks of materials, products or assemblies under actual fire conditions. However, the results of this report may be used as elements of a fire risk assessment that takes into account all of the factors that are pertinent to an assessment of fire hazard of a particular end use. While this report may be used for obtaining product acceptance, Ameriform, LLC is not responsible for the results.

**Notice:** Ameriform, LLC will not be liable for any loss or damage resulting from the use of the data in this report. This report pertains to the samples tested only, as provided by the manufacturer. Such report shall not be interpreted to be a warranty, either expressed or implied as to the suitability or fitness of said sample for such uses or applications as the party utilizing the report may apply such sample.